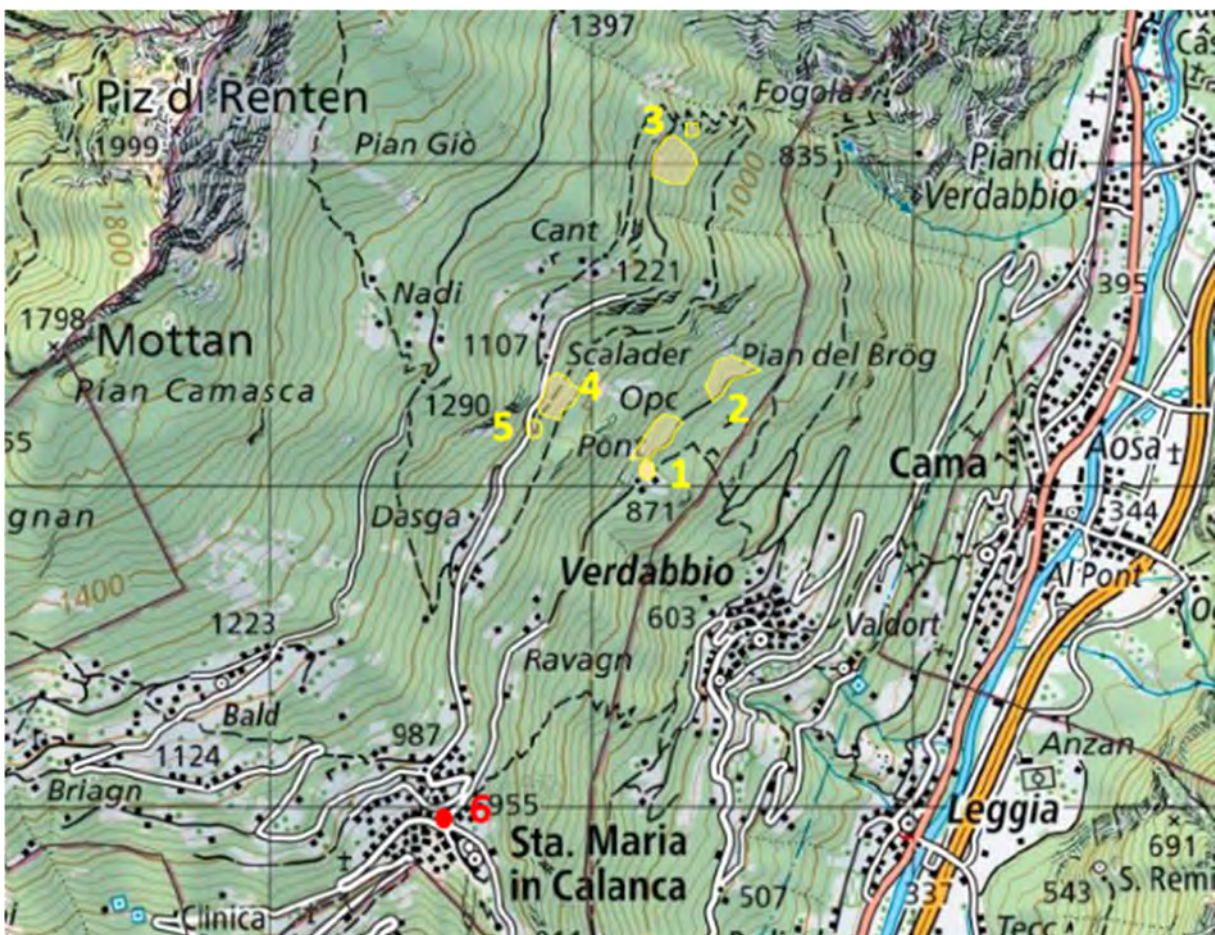




GWG – Sommertagung 2021 – Thema Waldbrand Exkursion Waldbrandgebiet Santa Maria 1997

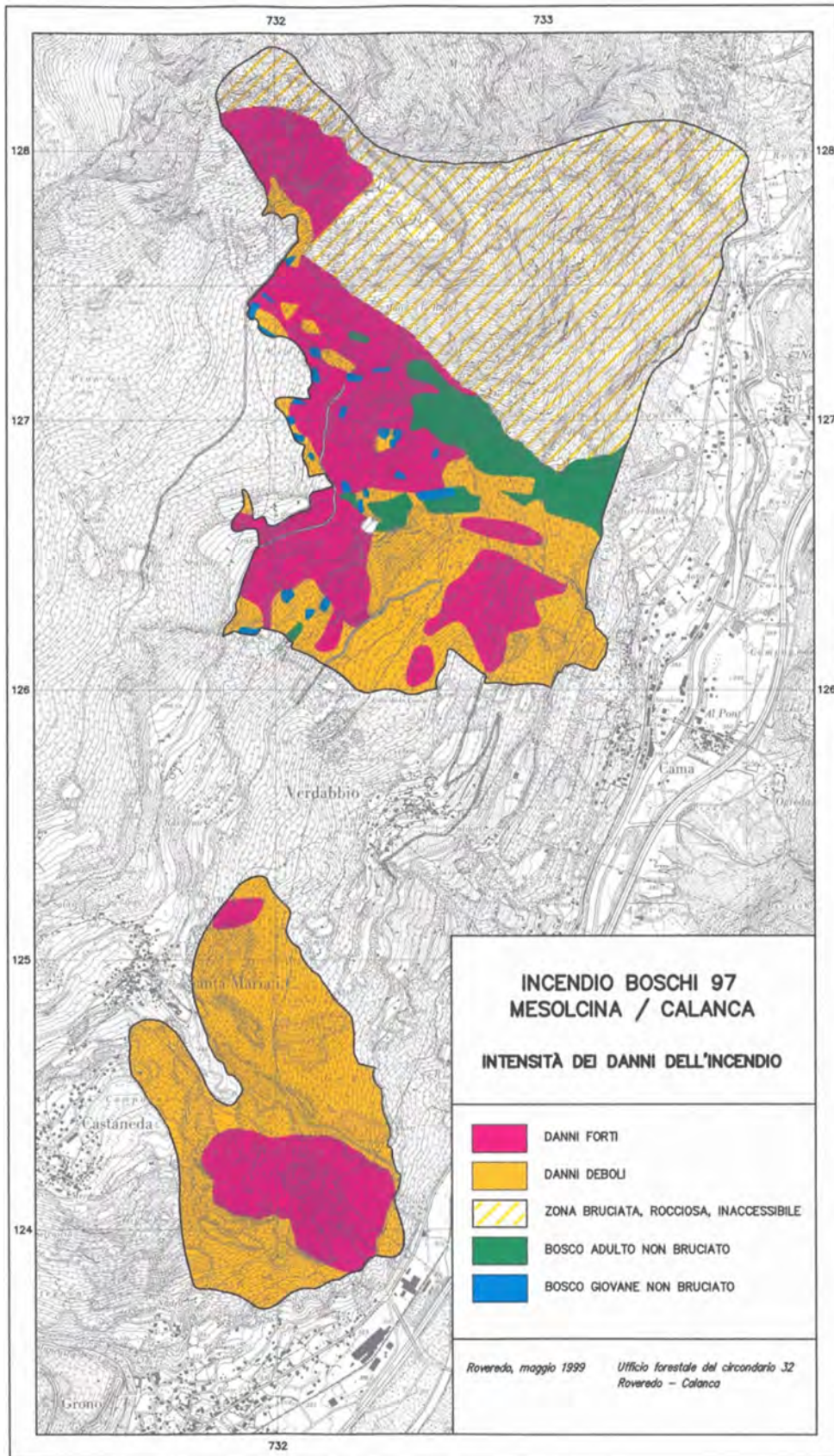


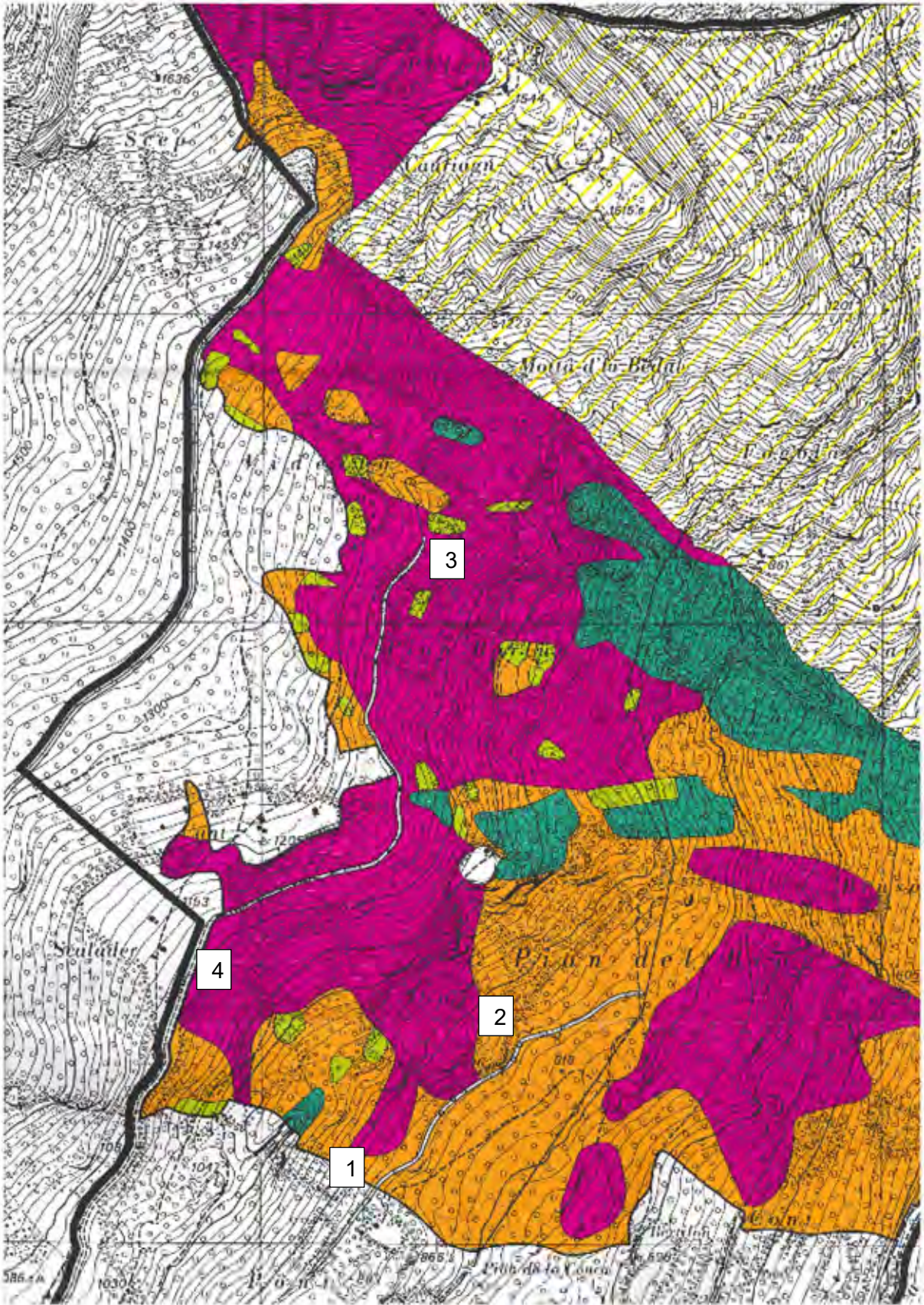
Exkursionsobjekte

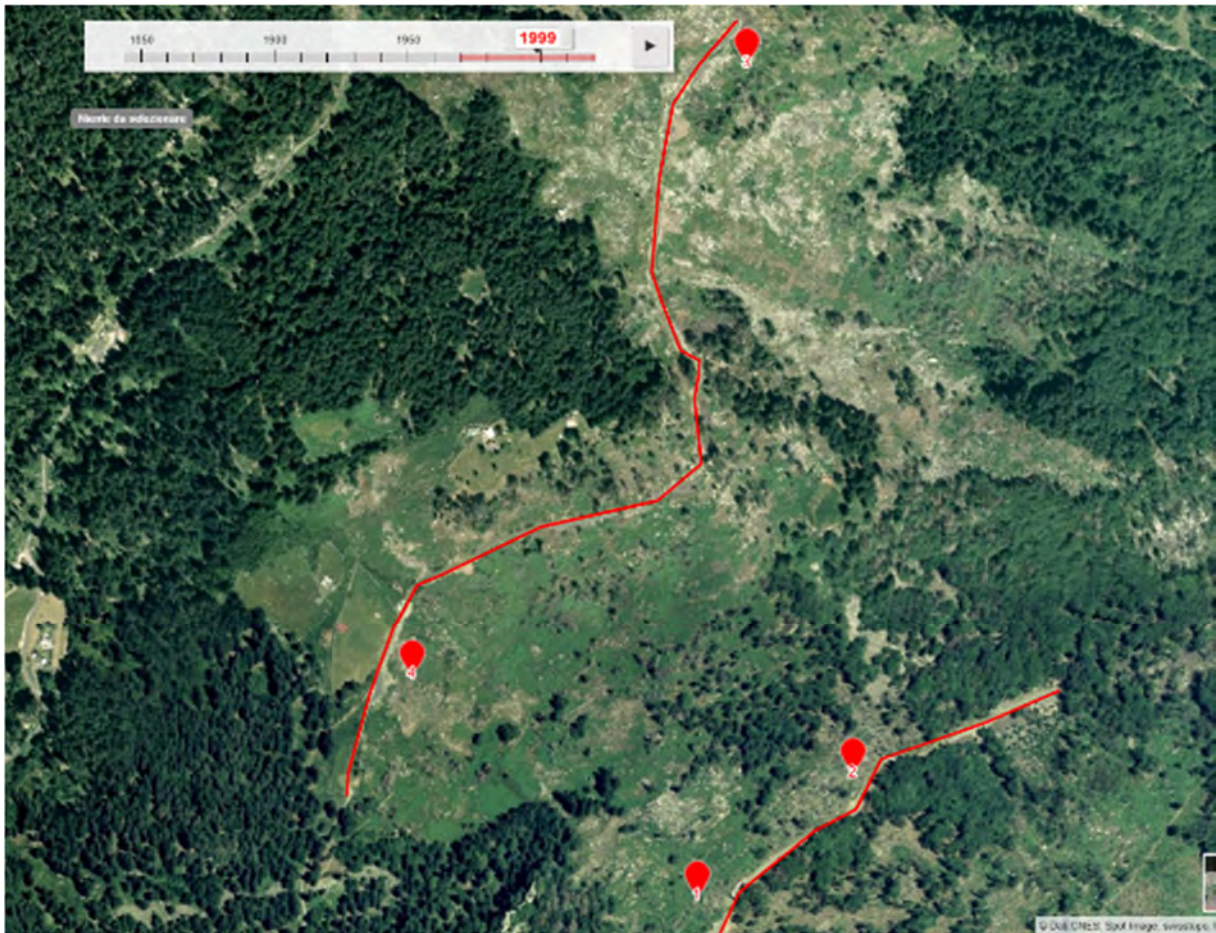
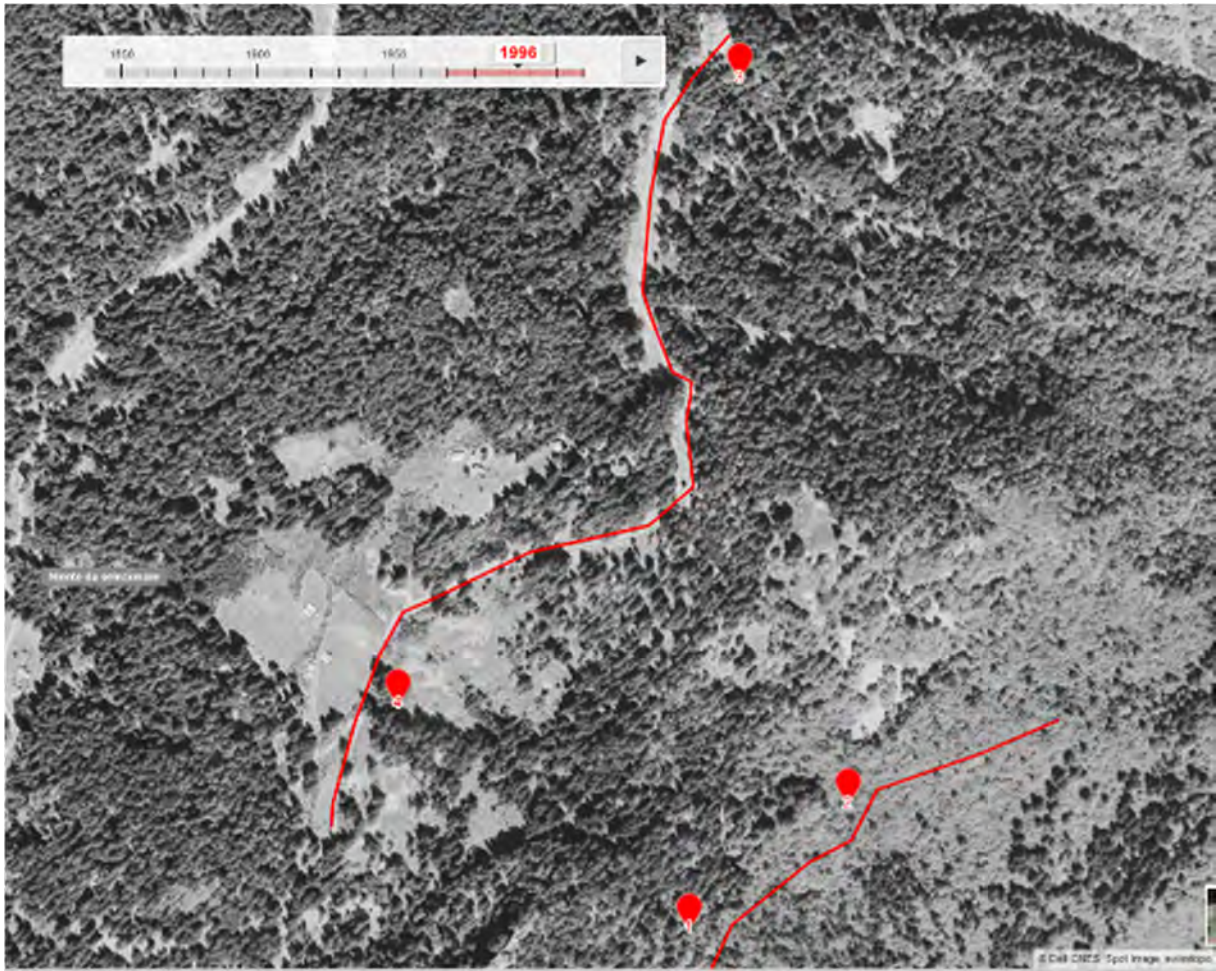
Revierförster Emanuele Neve
Regionalforsting. Luca Plozza, Davide Lurati
Photos Thomas Käthner

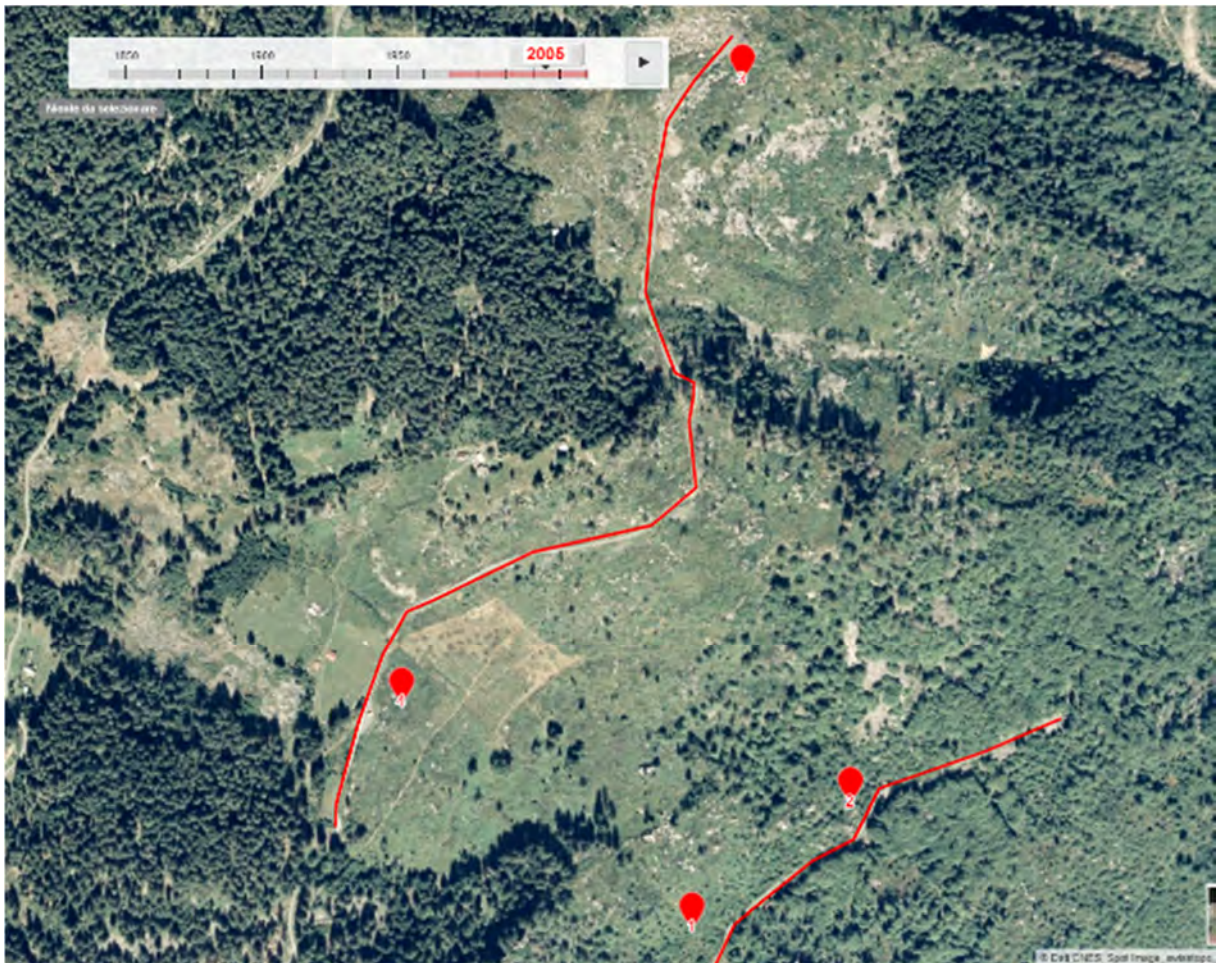
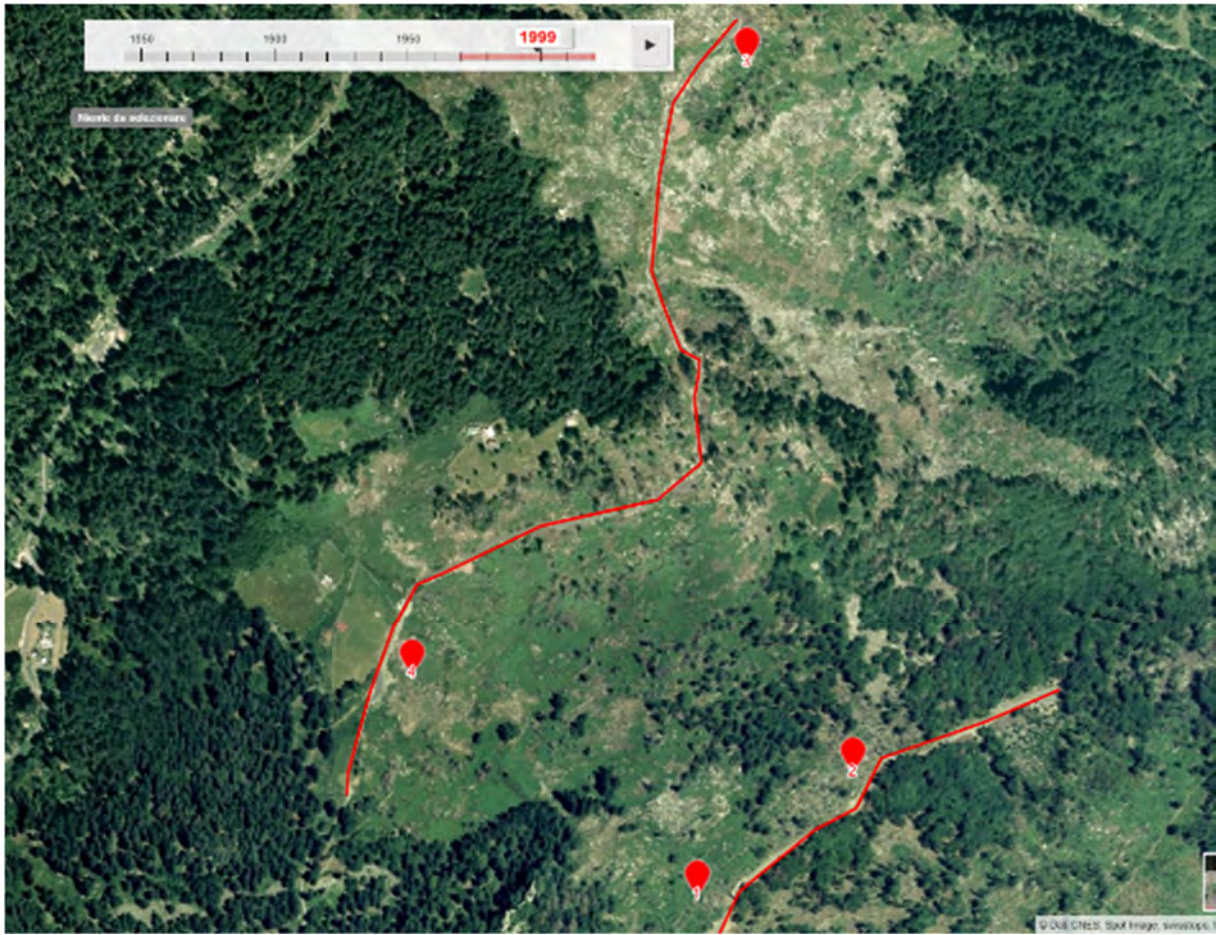
Waldbrand Verdabbio – Santa Maria 1997

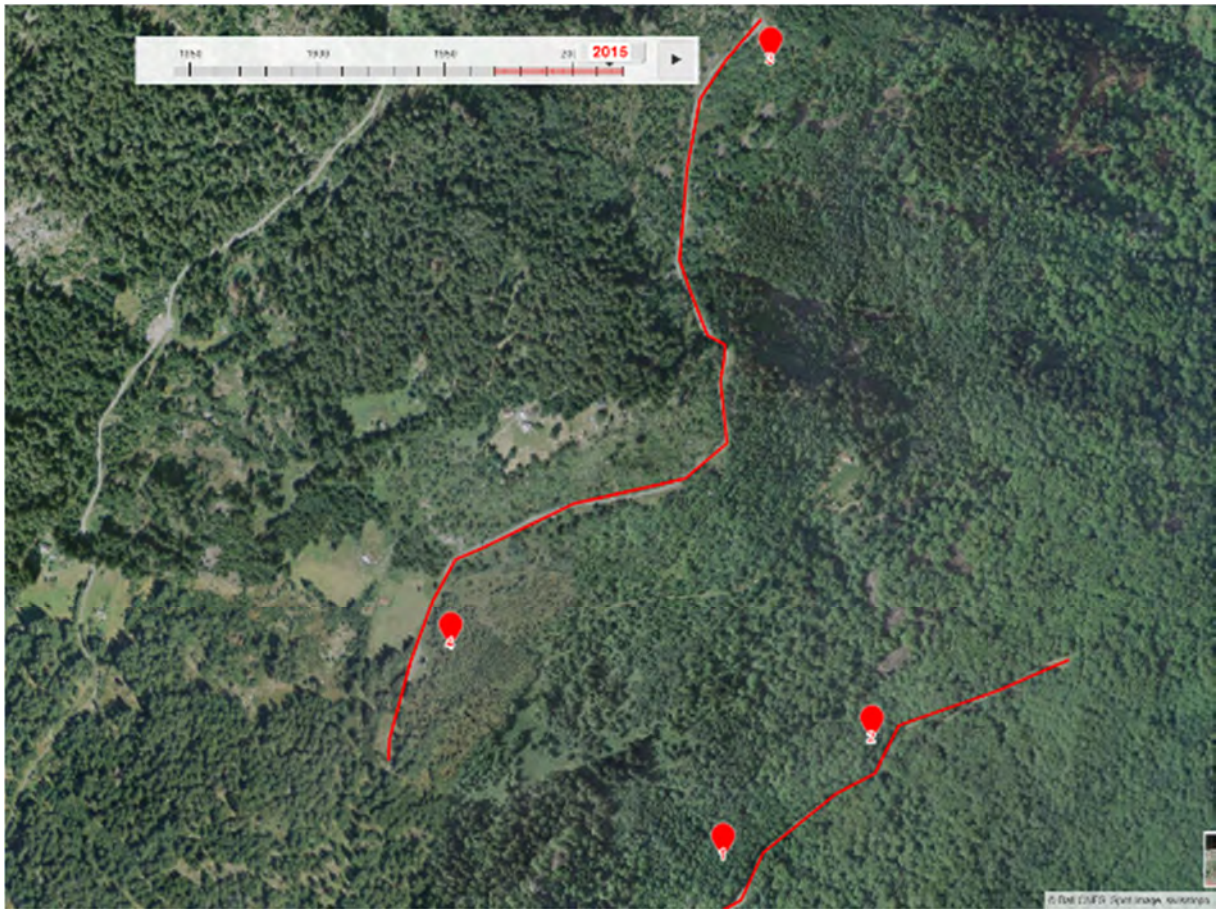
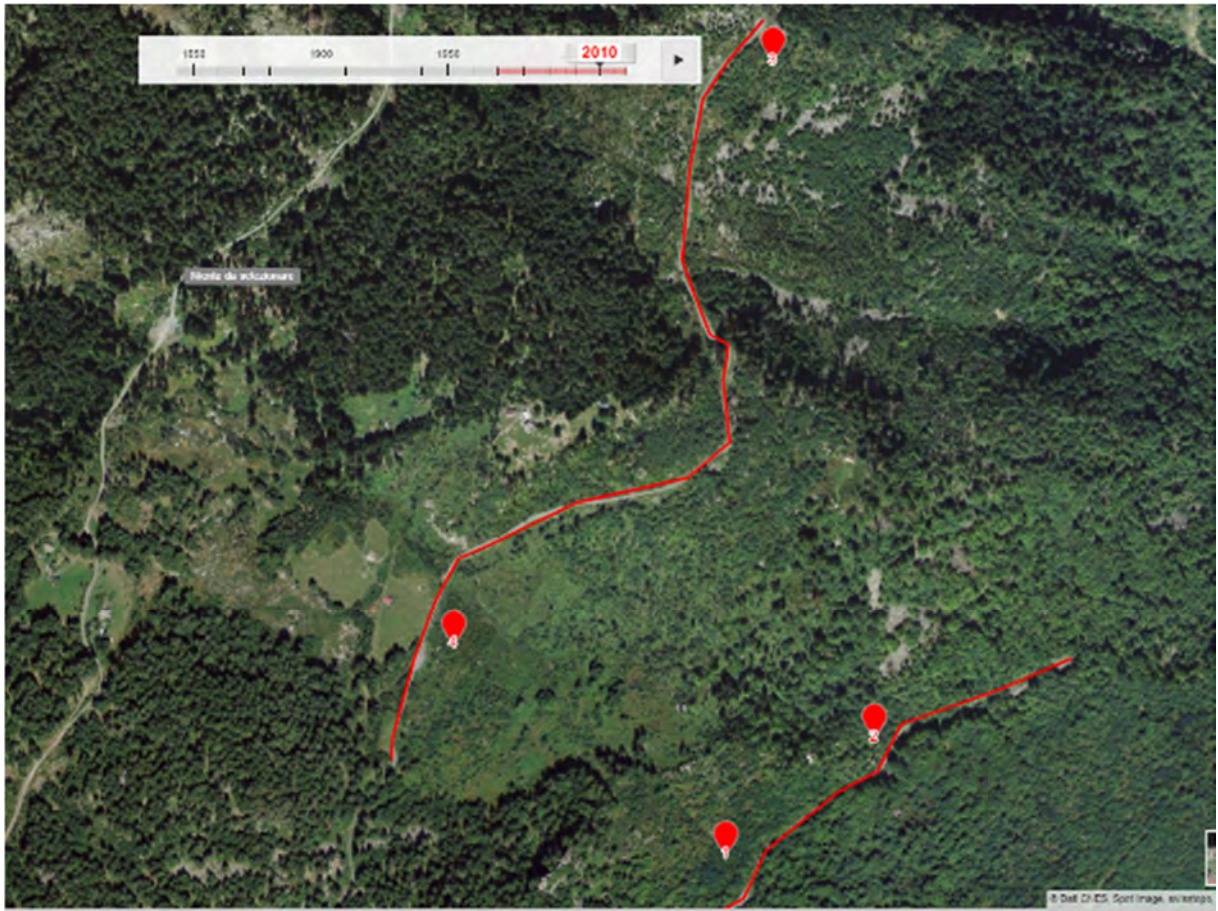
Gebrannte Waldfläche: 390 ha (293+97); vom 330 bis 1900 M.ü.M, 6 Gemeinden
 Dauer: 14 Tage ab 16.4.1997 nach 90 Tage Trockenheit und bei starker Nordwind
 Ursache: Brandstiftung, gleichzeitig 2 Waldbrände
 Löschkosten: 1,48 Mio Fr + 3,5 Mio Armee
 Wiederherstellungskosten: 2,2 Mio Franken

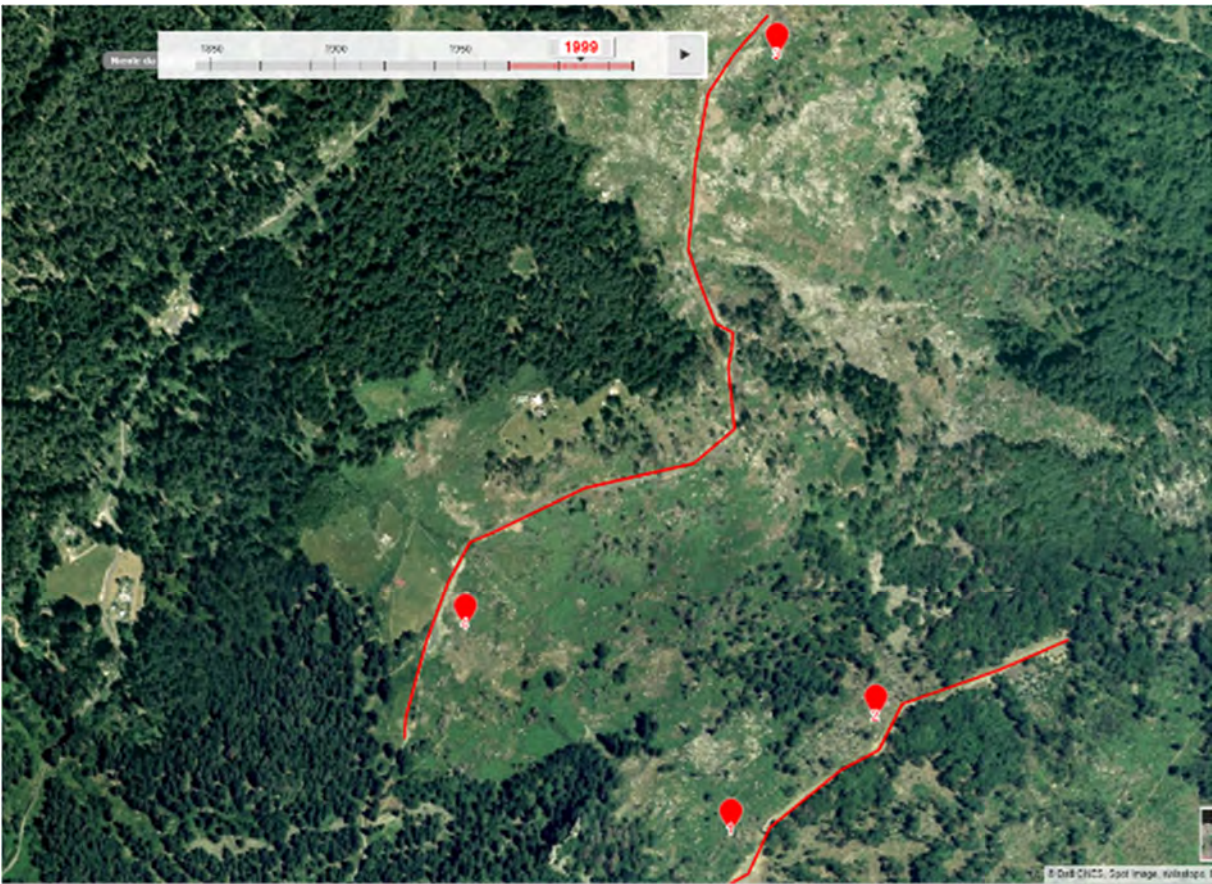
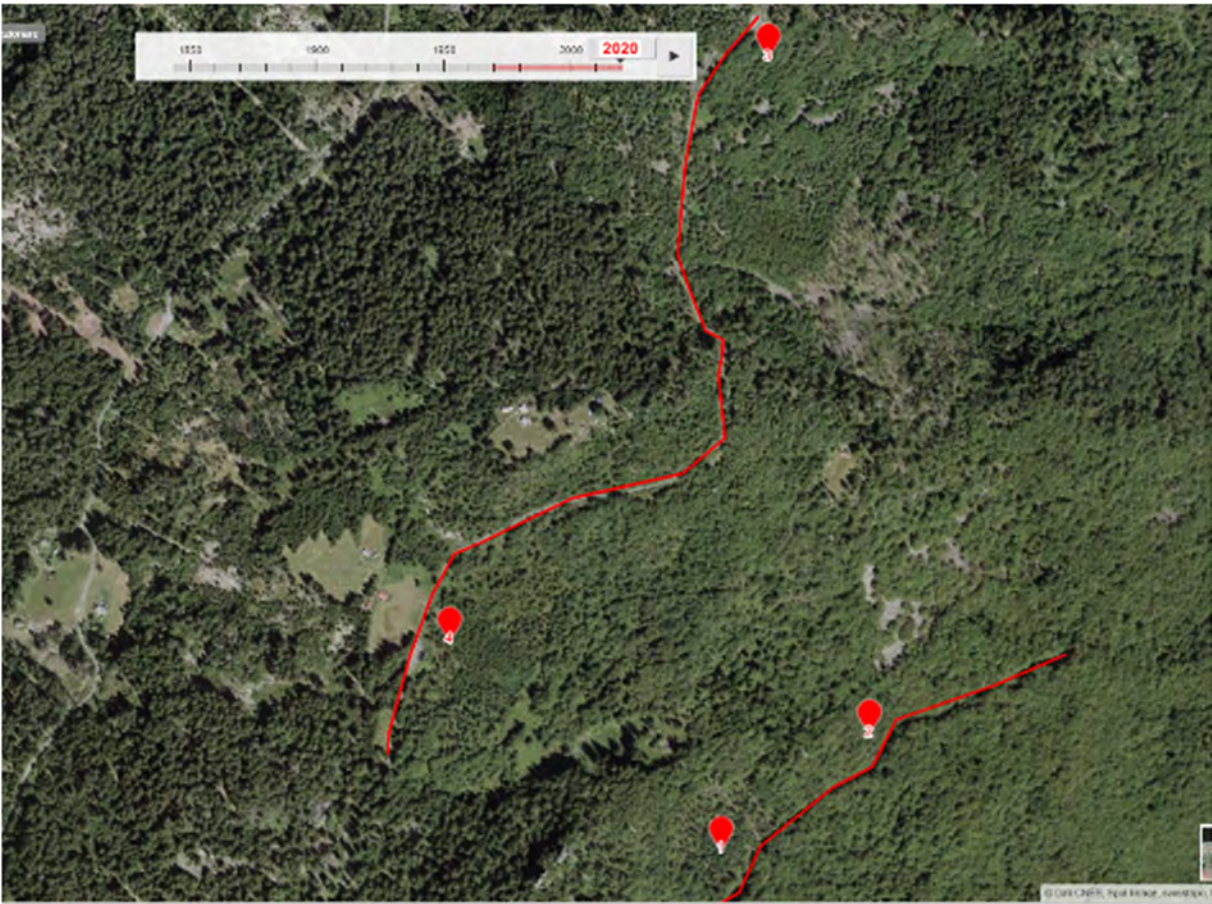


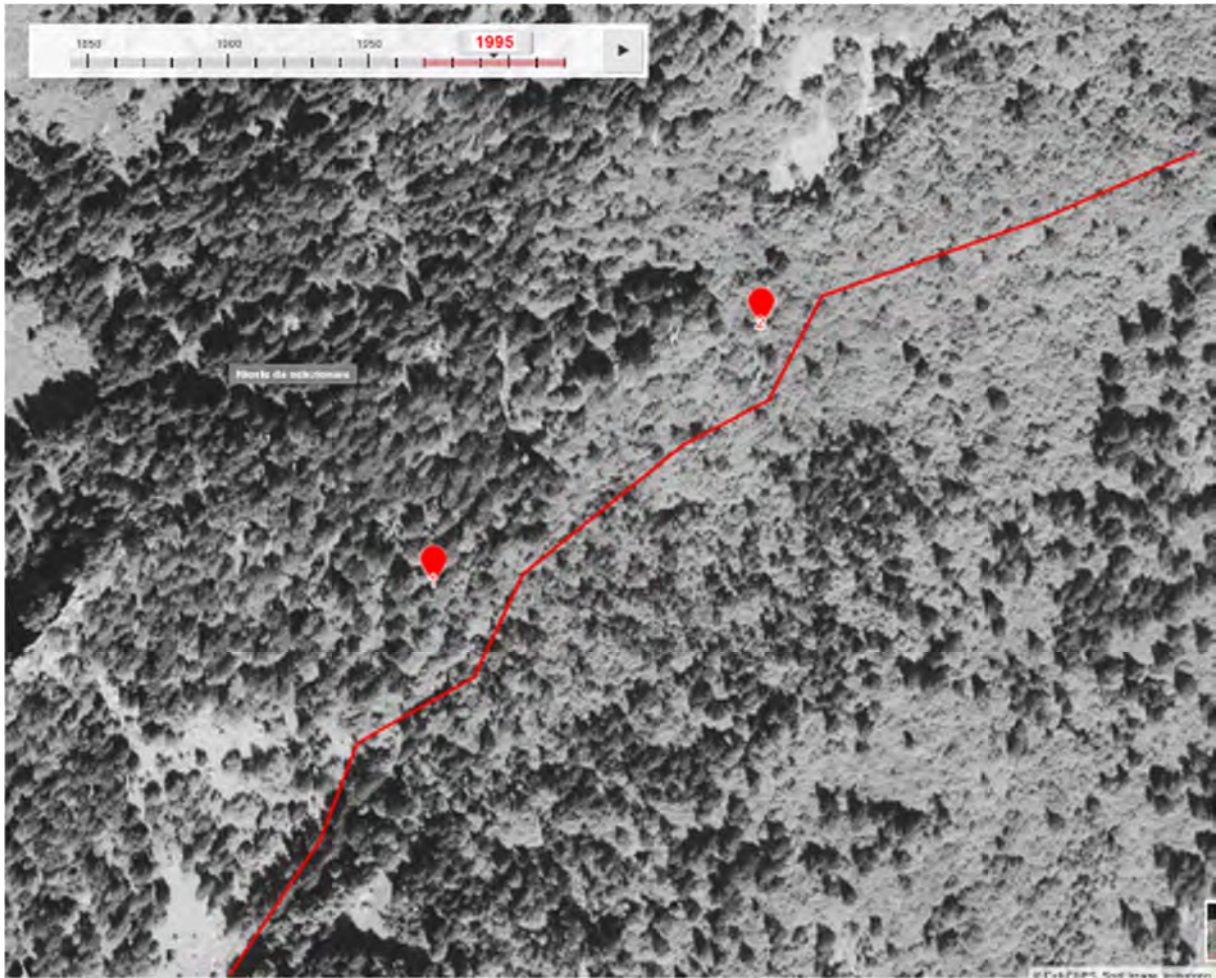


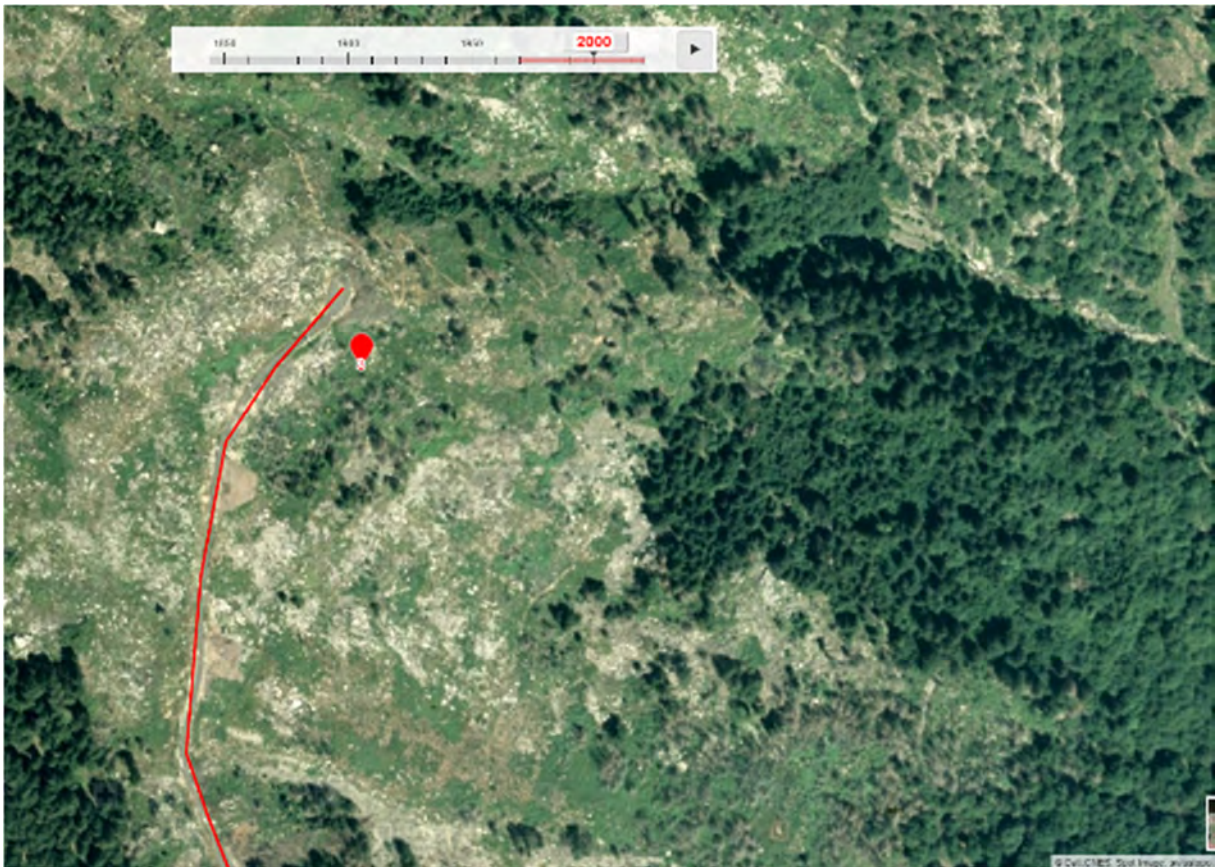


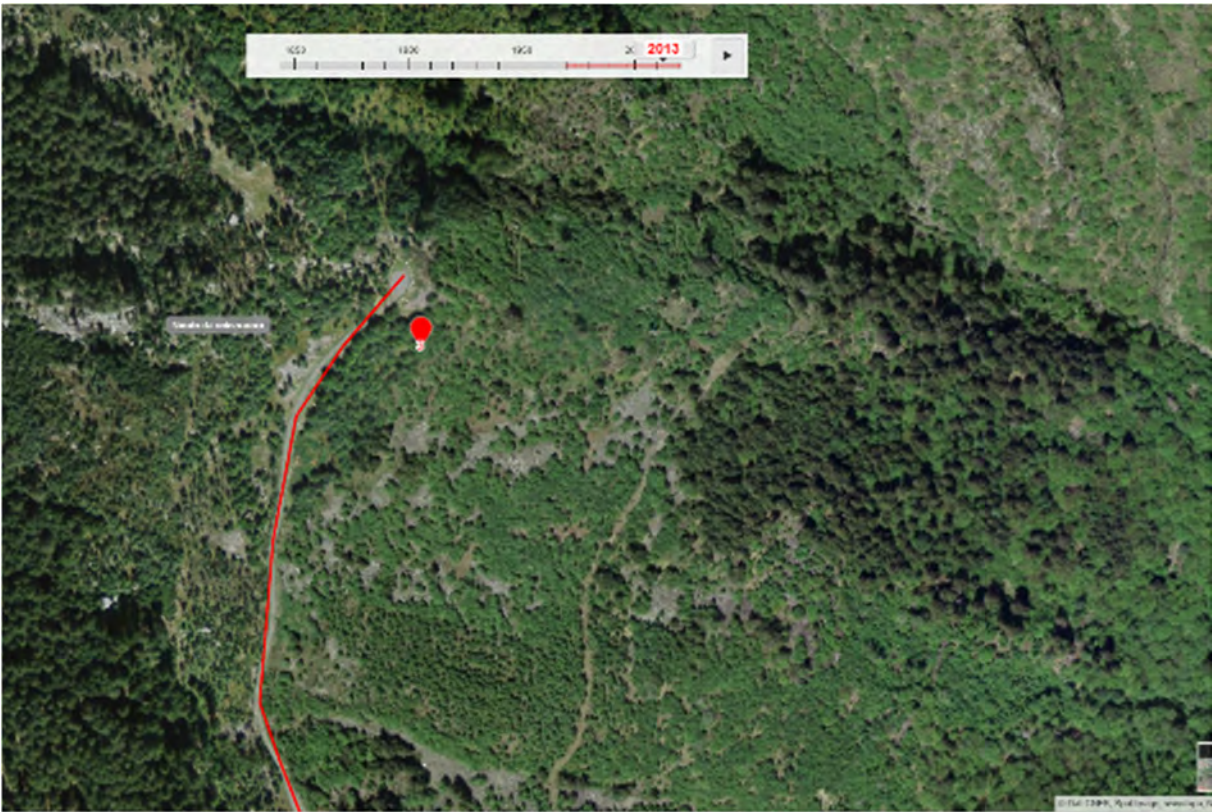


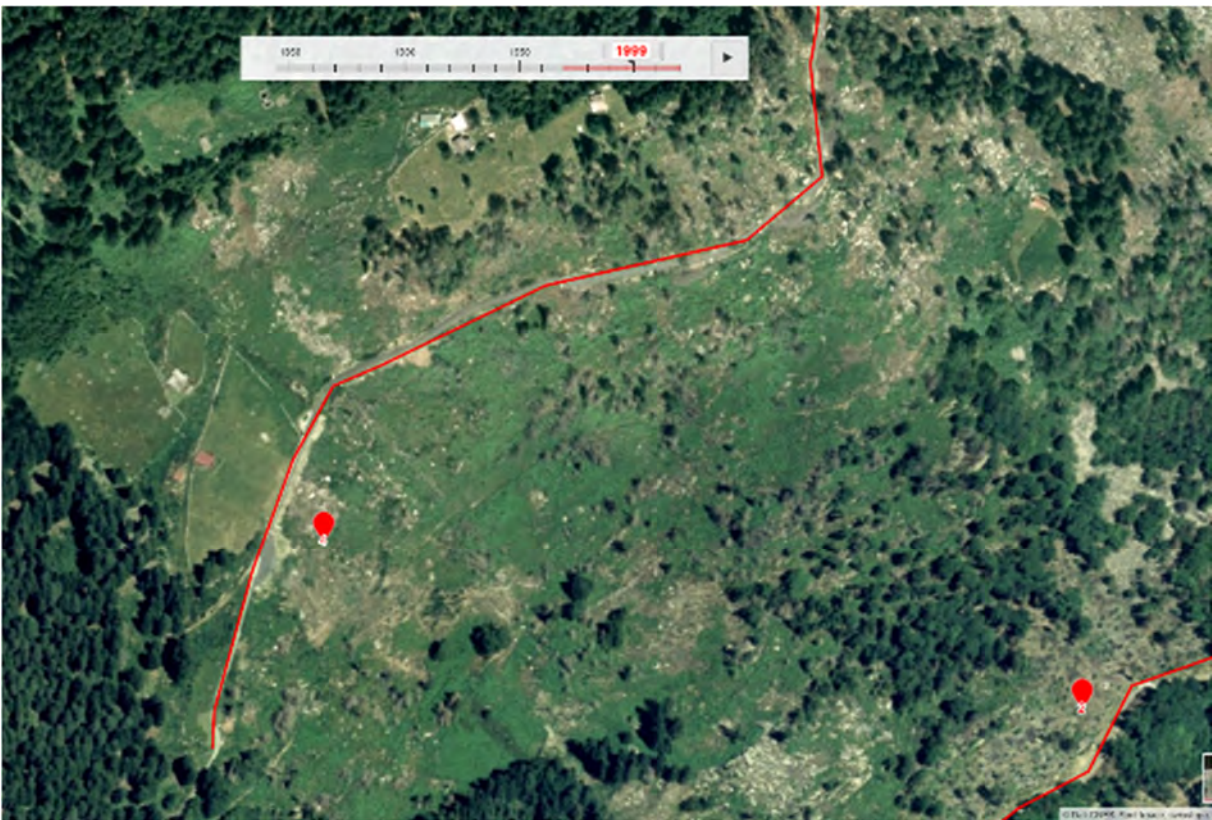








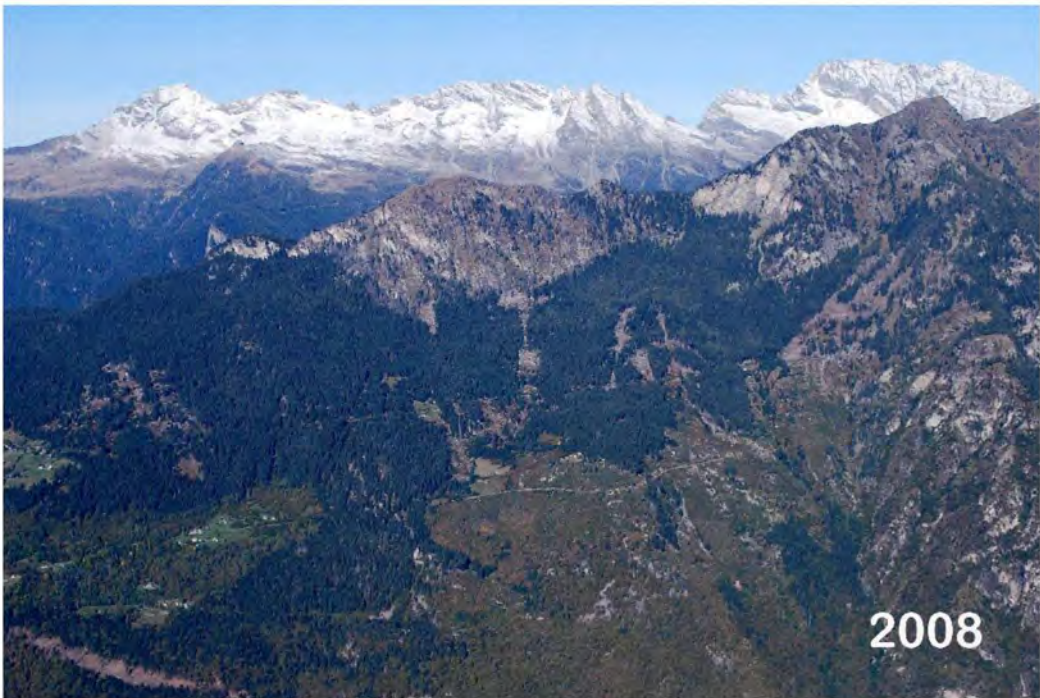








SANTA MARIA

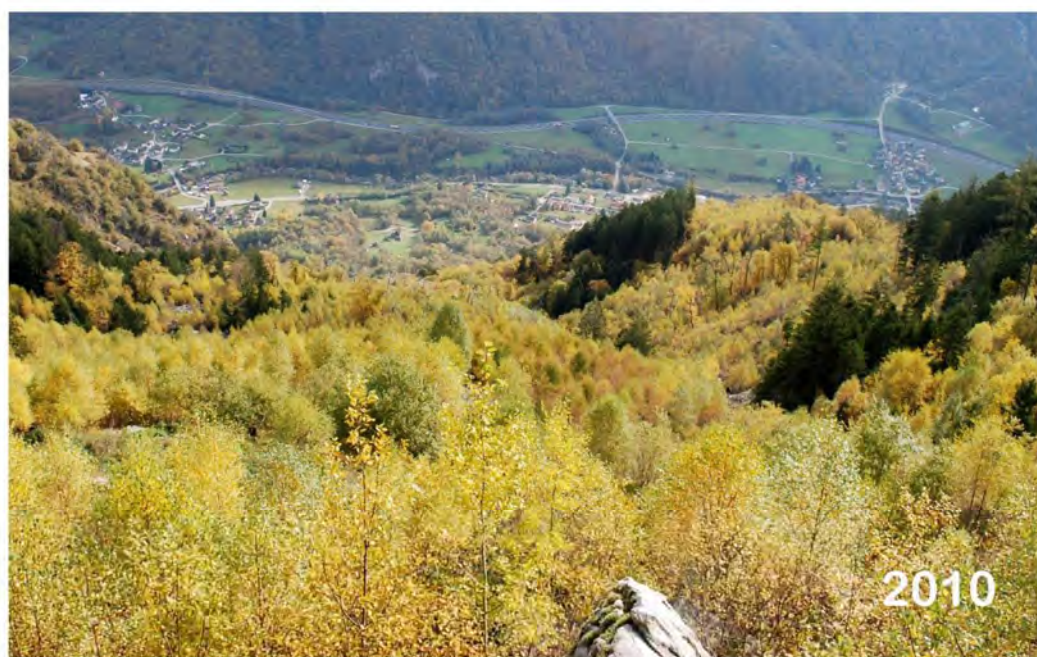








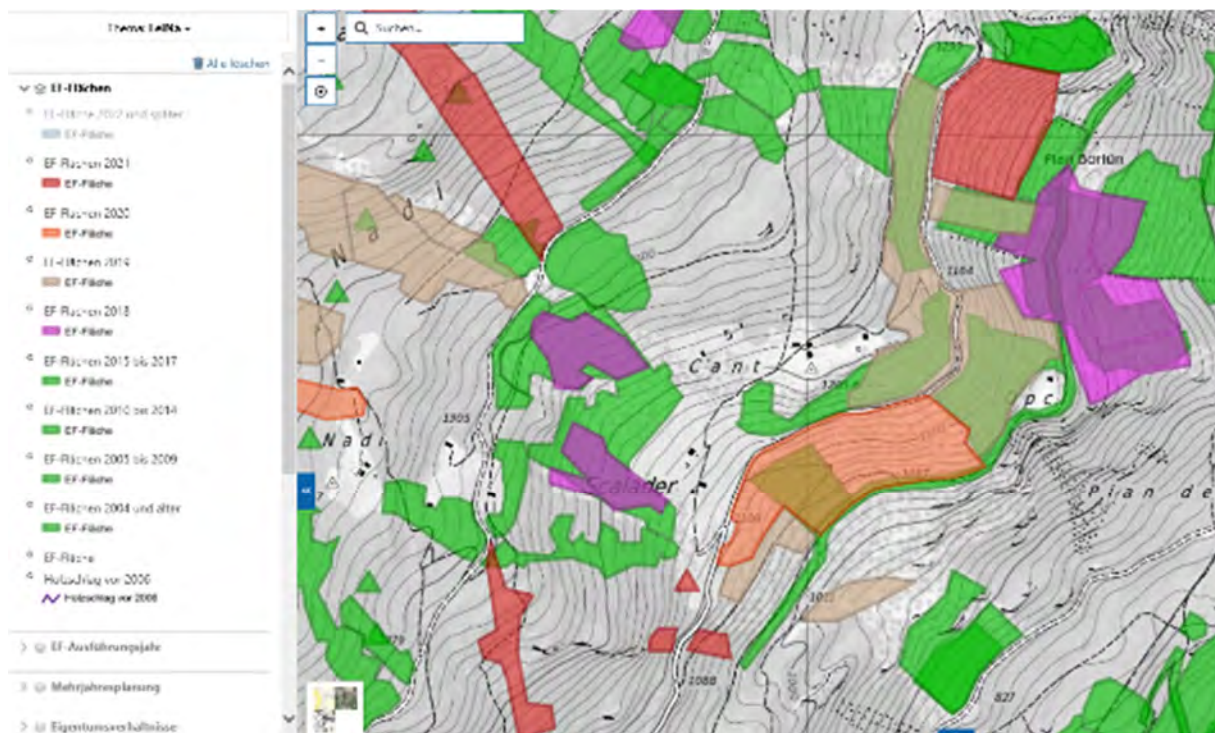














BACINI ANTINCENDIO MOESANO

PROGETTO DI MASSIMA

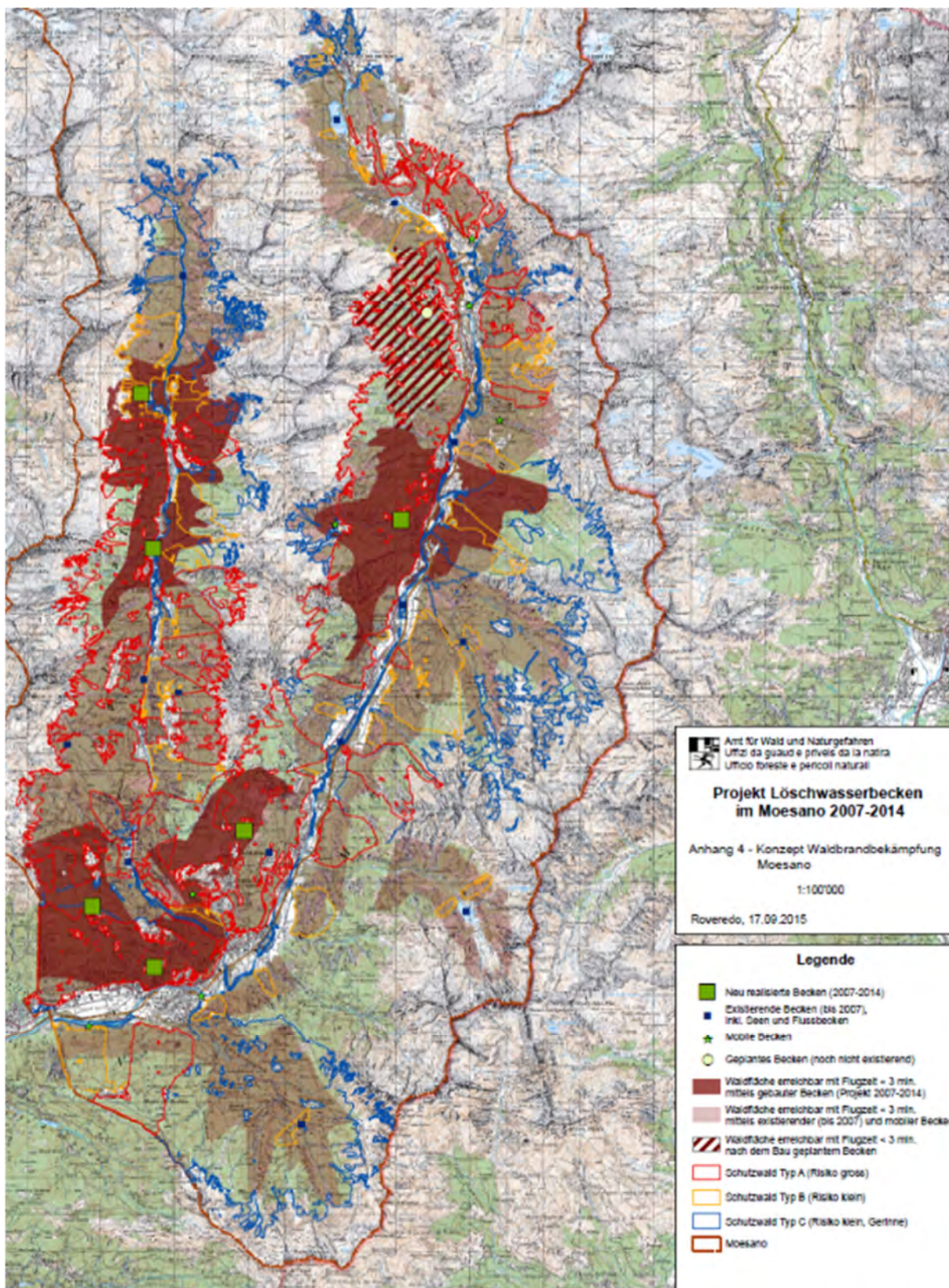
RELAZIONE TECNICA

KOPIE
AUFLAGEDOKUMENT
 Auflage vom 20. MRZ. 2007 bis 18. APR. 2007


Roveredo, 28 febbraio 2007

Ufficio forestale dei Grigioni
 Regione 4

Responsabile del progetto	Progettista
Ufficio forestale dei Grigioni / regione 4 Ing. Luca Plozza 6535 Roveredo	Ing. Simone Balzarini 6537 Grono





 Amt für Wald und Naturgefahren
Uffizi da guaud e privels da la natira
Ufficio foreste e pericoli naturali



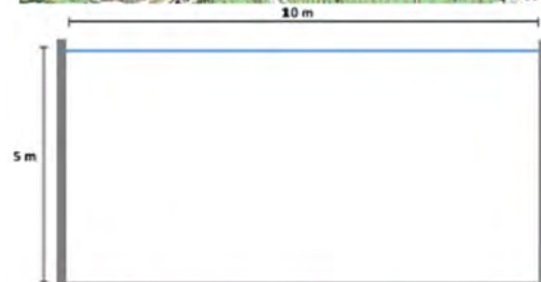
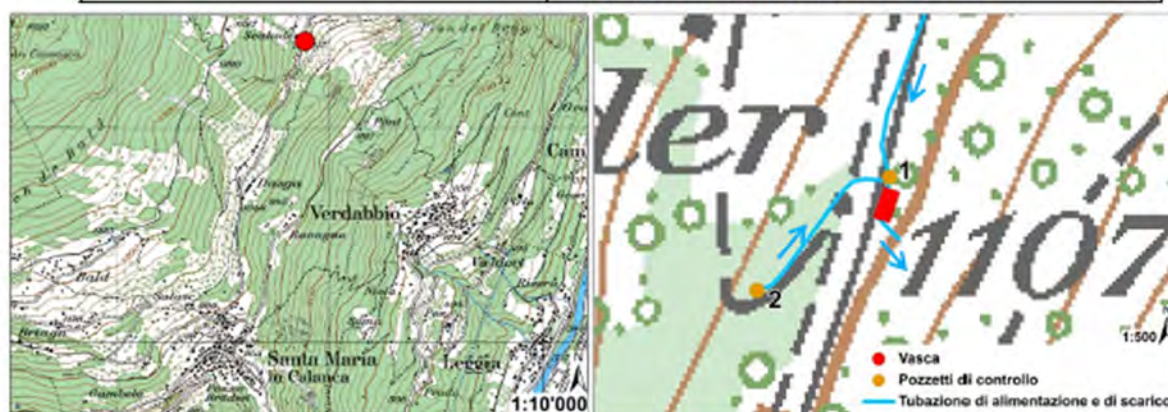




Vasca antincendio Scalader

Scheda informativa e modalità d'uso

Comune	Santa Maria	
Località	Scalader	
Quota	1100 m s.l.m	
Coordinate	731'885 / 126'405	
Accesso	Strada forestale: Santa Maria - Cant Portata 18 t. Larghezza massima veicoli: 2.30 m	
Dimensioni	5m x 10m x 5m	
Capienza	250 m ³	
Alimentazione	Serbatoi Scalader + Bedoli Serbatoi Cimona + Scep	Riserva 25 m³ Riverva 16 m³
Flusso normale	10 - 20 l/min	
Flusso in caso di evento	100 l/min ca. (fino esaurimento serbatoi)	
Informazioni	Ufficio foreste e pericoli naturali 081 257 65 76 Comune di Santa Maria 091 827 31 20	



Situazione normale

Serbatoi Cimona + Scep
Aperto ¼ di giro (10-20 l/min)

Serbatoi Scalader + Bedoli
Chiuso



Pozzetto 1

In caso di evento

Serbatoi Cimona + Scep
Aperto completamente

Serbatoi Scalader + Bedoli
Aperto completamente



Pozzetto 1

Chiudere completamente il rubinetto

Direzione cascine

Sempre aperto

Direzione vasca



Pozzetto 2